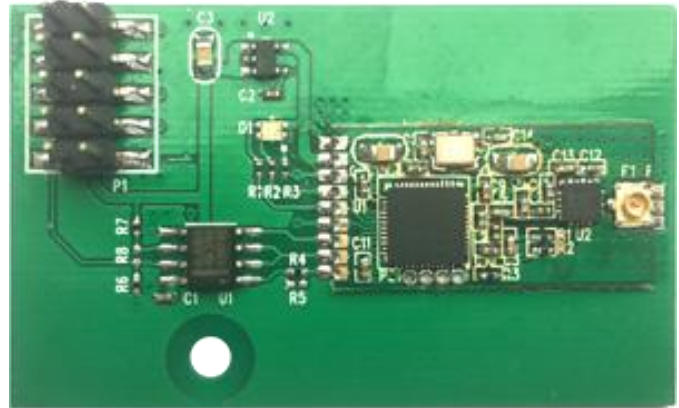


# LC-512C

## *Wireless Solution Compatible Wireless DMX512 Transceiver Module*

- Air protocol, circuit connections and structural dimensions are fully compatible with Wireless Solution
- FHSS with 79 Channels, interference-free operation.
- 32-bit ARM Processor, DMA transfer without delay
- One-touch operation with a Tri-color status indicator
- Built-in Wireless Solution Compatibility Mode
- Automatically learning of various parameters of controller, just like DMX transfer via cable
- Group Mode, easy plug-and-play operation; Pairing Mode, supports more transmitter universes



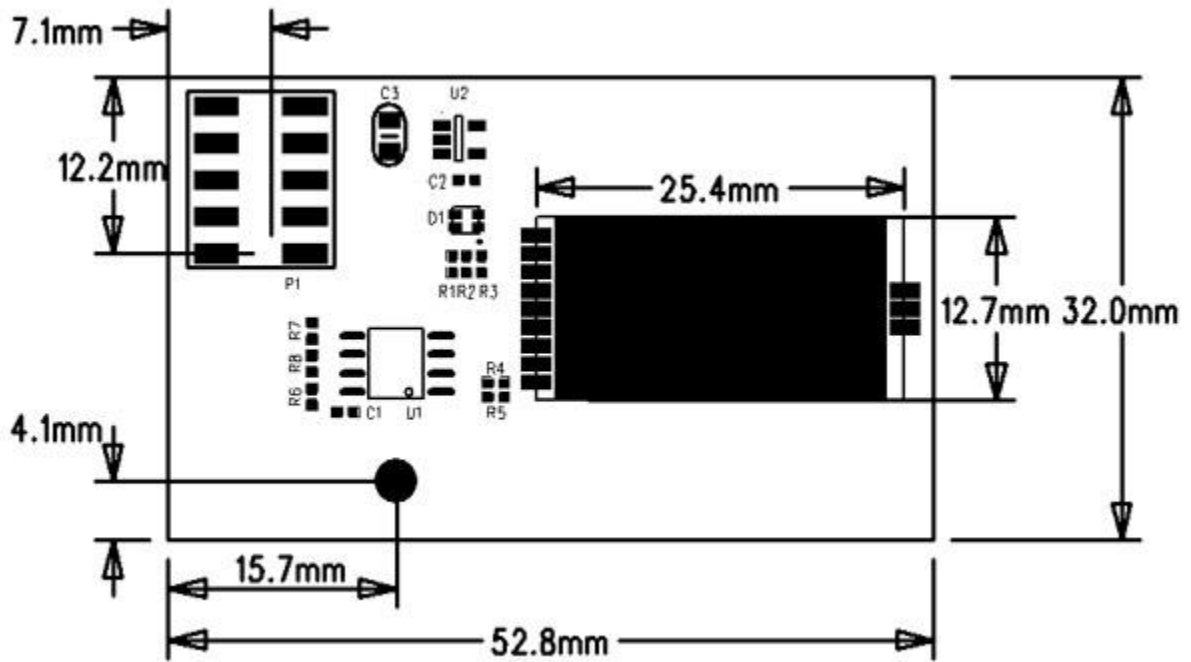
## Overview

LC-512C is fully compatible with the wireless module of Wireless Solution (Sweden Company) in size and protocol. You could enjoy the same or higher quality of wireless DMX transceiver module at a price half of that similar product. Our company is the only company in China that can produce built-in Wireless Solution Compatibility Mode.

## Application

- Stage lighting applies to the Grand Variety Show, Gymnasium, Temporary Set-up Stage, TV Station, Centers Conference, Theaters, Opera, Theme Parks, Dance Halls, and Bars, or any lighting equipment with standard DMX512 XLR etc.

## Dimensional drawings



## Description of Status Indicator

Mode	Action	Status Description
W-DMX Receive Protocol	White	Connection is not Established
	Red	Deleting Connection
	Red(Fast-Flash)	Connection is Lost
	Green(Fast-Flash)	Connecting to Transmitter
	Green(Slow-Flash)	Connected, Without DMX Signal
	Green	Connected, Receiving DMX Signal
W-DMX Transmit Protocol	Red	Deleting all Receivers' Connection
	Blue(Fast-Flash)	Connecting with the Receiver(s)
	Blue(Slow-Flash)	No DMX Signal Input
	Blue	Transmitting DMX

## Operation Guide

### 1.In W-DMX Transmit protocol:

- 1) By pressing the button, the transmitter can be connected to all powered but not connected receivers within the coverage area;
- 2) Press and hold (> 3S) the transmitter's button until the indicator turns red. The device will delete all the receivers' connection within the coverage range.

### 2.In W-DMX Receive protocol:

Press and hold (> 3S) the receiver's button until the indicator turns white. The device would disconnect with the transmitter.

## Specifications

### Weight and Dimension

Dimension: 53 x 32 x 10 mm

Weight: 25 g

### System Information

CPU: 32-bit ARM Core

### Radio Parameters

Range: 600 meters (line-of-sight)

Frequency: 2.402 - 2.480GHz, ISM, 79 channels

Spread Spectrum: FHSS, 1100 hops / sec

Modulation: GFSK

Maximum Transmit Power: 23dBm

Receiver Sensitivity: -94dBm

### DMX Signal Interface

RS485

### Environmental Limits

Operating Temperature: -40 ~ 85 °C

Storage Temperature: -65 ~ 150 °C

Ambient Relative Humidity: 5 to 95% (non-condensing)

### Power Requirements

Power Input: DC 5V,  $\pm 5\%$

Power Consumption: 350 mA@5V DC max.

### Reliability

Automatic Reboot Trigger: Built-in WDT (watchdog timer)

### Warranty

Warranty: One-Year Limited Warranty