
IR-104

Infrared Learner

● Overview

IR-104 infrared learner is that we sum up the years of smart home, the hotel experience in control systems, combined with the launch of the super market demand for IR learning control panel. IR-104 has RS232/RS485 communication interfaces to meet the control requirements, you can choose to install our the EM-32S series of TCP/IP components, directly network remote control. IR-104 with 4-way infrared output (scalable to more), 4-way I/O input (detection device status), flexible control protocol can be customized to meet your any harsh infrared control needs.

➤ **Strong ability to learn**

IR-104 is different from the commonly used infrared learning device of the significant characteristics we adopt mathematical statistics the remote control code, to elimination of random errors; intelligent identify repeat code to reduce the learning code size, particularly suitable for volume and other long-button of the control; after long-term market test super infrared code pressure places technology, especially for air conditioning, projector and other long code and the study of the strange code control.

➤ **A wide range of compatibility**

IR-104 for pressure places a special control code, using the original code storage, intelligent mapping of storage area, you can learn the market all the remote control.

➤ **Built-in Ethernet interface**

Directly use EM-32S series of TCP/IP components, network remote control.

➤ **Application**

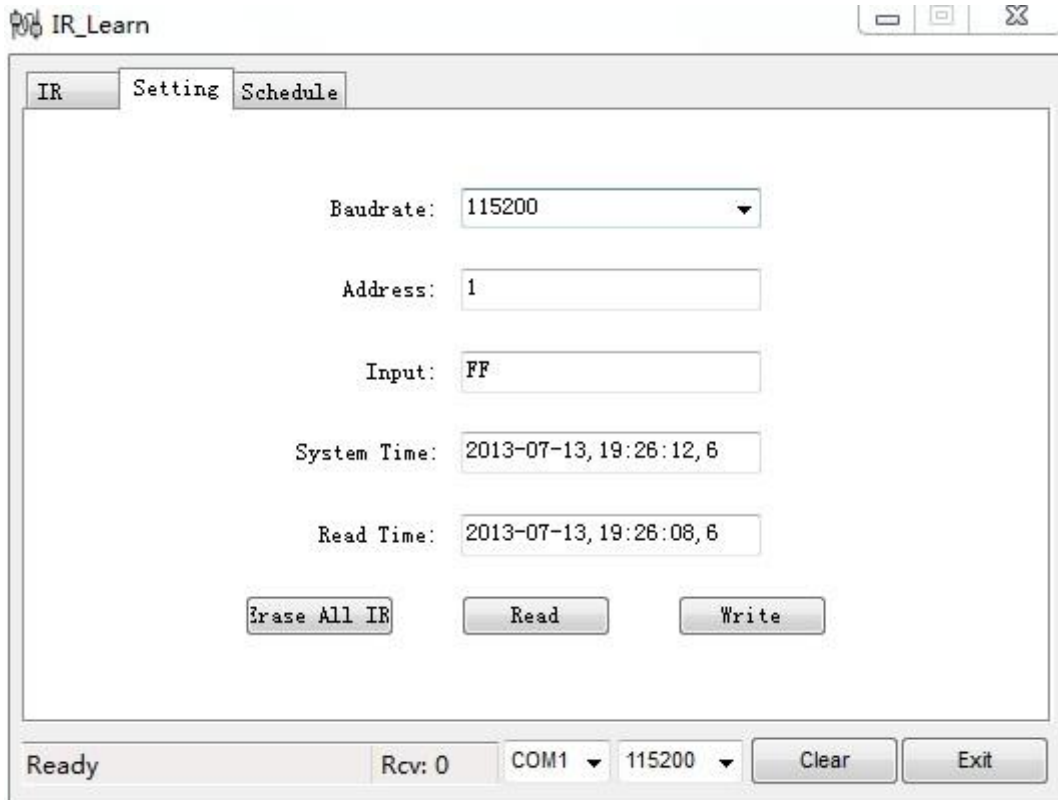
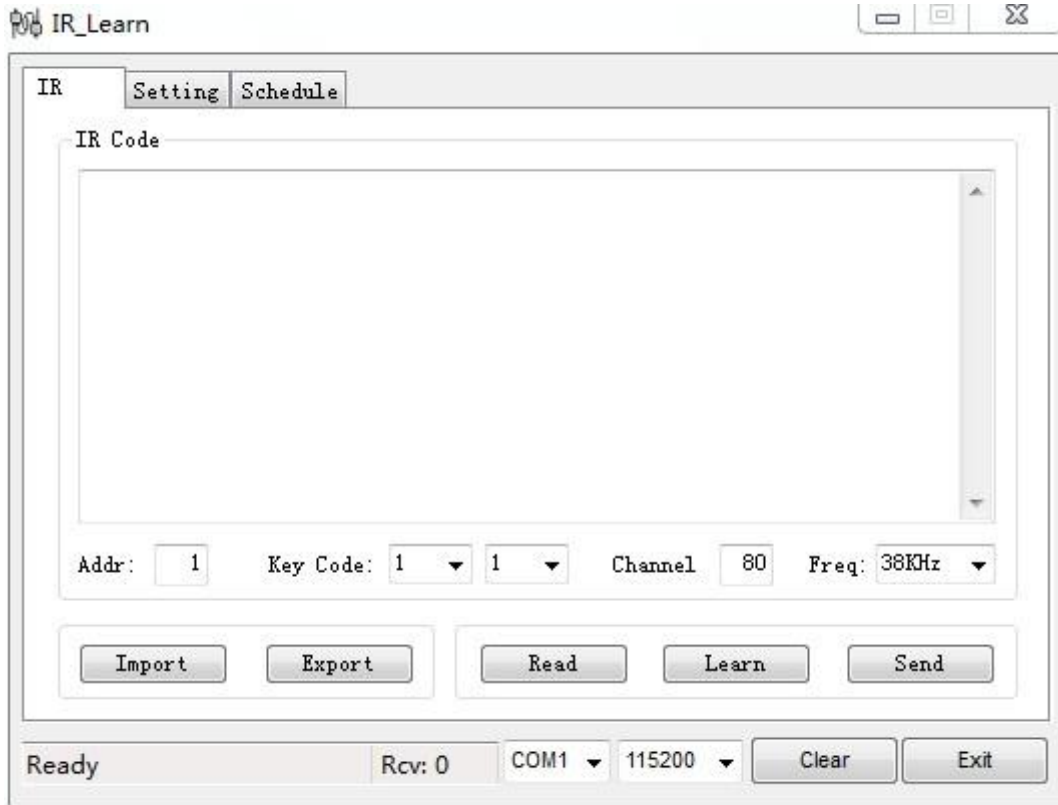
Smart home, hotel control systems

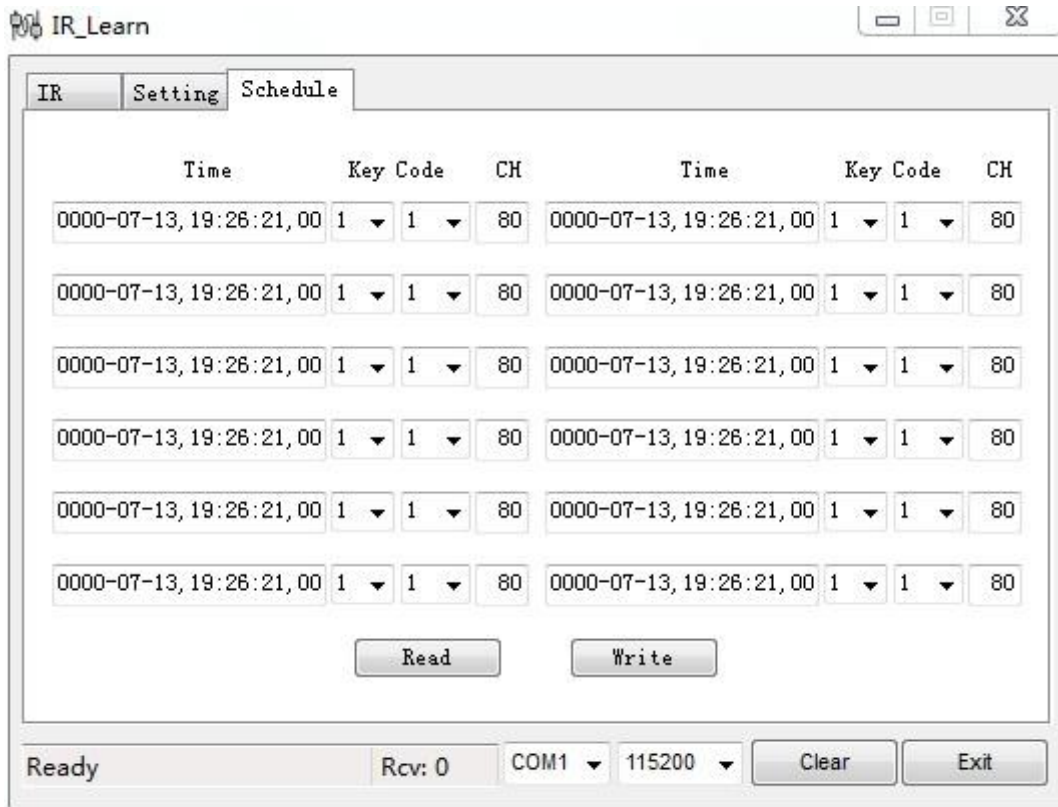
Central control, conference systems

● Features and Benefits

- Super air-conditioning, projector and other long codes and strange codes to learn
- Intelligent data analysis to eliminate the random error
- Intelligent Recognition of repetitive coding, reduce learning the code length
- The super-code pressure places, saving storage space
- Real-time clock, support up to 12 channels of timer functions
- Infrared code, import, export function to facilitate the batch installation

● Software Interface





Form Factor

Dimensions: 110 x 68 mm

Weight: 48 g

Ethernet Interface

Rate: 10/100 Mbps, Auto MDI / MDIX

LEDs: Speed 10/100 M, connection run (LNK / ACT)

Serial Interface

RS232,RS485,TTL

Serial Communication Parameters

Parity: None, Even, Odd, Space, Mark

Data bits: 7, 8

Stop bits: 1, 2

Flow Control: RTS / CTS

Baud rate: 1,200 bps ~ 230,400 bps (supports non-standard baud rate)

Environmental Limits

Operating temperature: -40 ~ 85 °C

Storage Temperature: -65 ~ 150 °C

Ambient Relative Humidity: 5 to 95% (non-condensing)

Power Requirements

Power Input: 9 - 22 VDC

Power Consumption: 70 mA@12 VDC max.

Reliability

Automatic Reboot Trigger: Built-in WDT (watchdog timer)

Warranty

Warranty Period: 5 years

