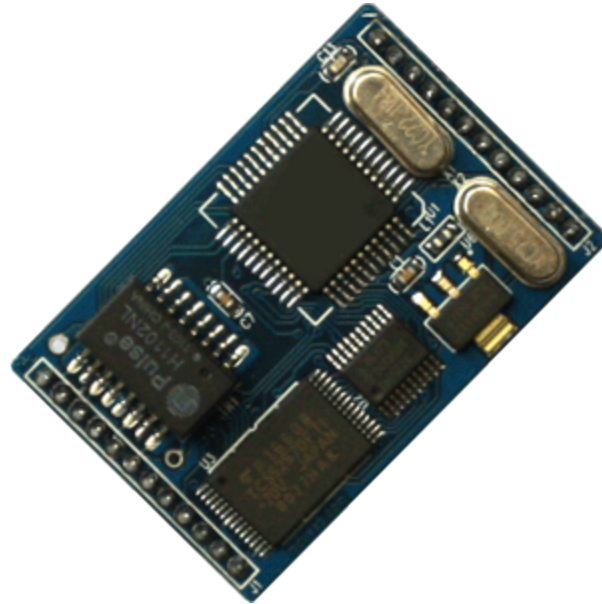


# EM-200 Series

## *10/100 Mbps Embedded Device Networking Module*

- Serial (TTL) 10/100M auto-detect Ethernet switch embedded device networking module
- Small size (42 x 28 mm)
- Support network cable Auto MDI/MDIX, straight through, crossover cable can work
- Built-in WDT, to ensure long-term stable and reliable work
- Search by ezConfig or Web browser plug-line parameter configuration
- TCP Server, TCP Client, TCP Mixed, UDP, Real COM operation modes
- Real serial port mode (automatically set the serial port parameters)
- Support for DNS, DHCP, multicast, and broadcast applications
- Supports two TCP connections
- Full transparent data transfer, disconnection detection
- Supported gateway, across the wide area network routing information
- High reliability, low cost



## Overview

EM-200T is equipped with multiple ethernet communication protocol (TCP Server, TCP Client, UDP), serial devices to your network immediately. EM-200T compact size of only 42 x 28 mm size not to even half the credit card. This compact size allows you to easily EM-200T integrates with your serial device, so that your serial devices to the 10/100M speed networking.

## **Built-in TCP / IP communication protocol**

EM-200T built-in TCP / IP communication protocol for R & D engineers can easily be networked serial devices, no longer need to spend a lot of time and effort writing TCP / IP communication protocol. In this way, engineers can use most of the time in the development of other more important features, so that the company launched the product cycles. 10/100M auto-detect the interface so that you can enjoy the advantages of high-speed transmission, Auto MDI / MDIX feature allows the network cable straight through, crossover cable may work.

## **User-friendly design options**

through easy-to-use windows program ezConfig or Web browser to complete the setup, plug and play.

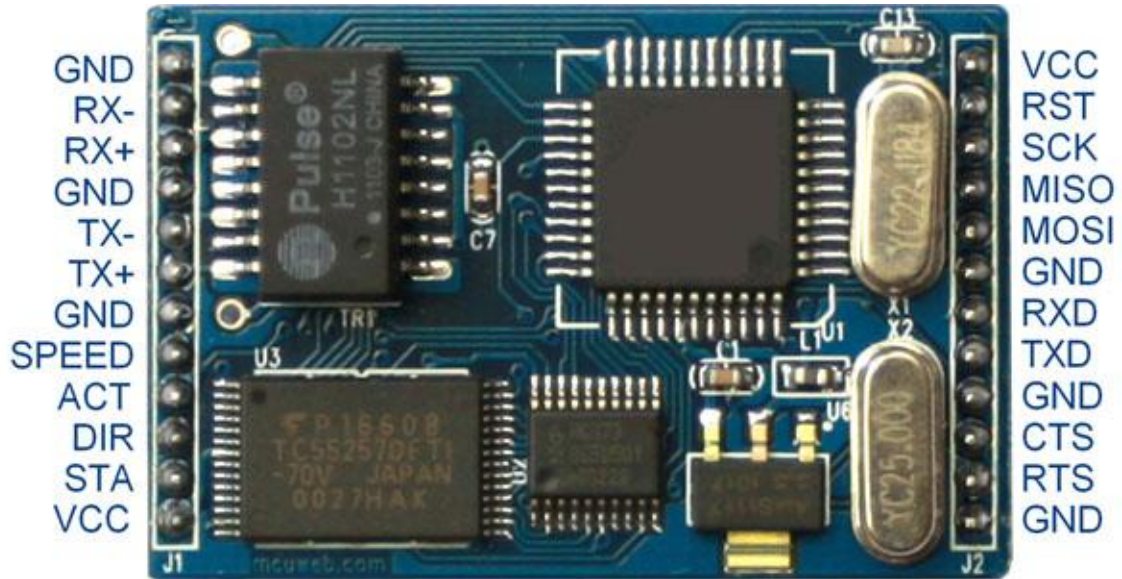
## **Shorten product launch schedule**

EM-200T with a standard pin spacing (2mm) and 24 pin double-pin design allows you to shorten the design cycle so that products can be launched as soon as possible. Built-in transformer to ensure uninterrupted signal, but also ethernet circuit design saves time and space. In addition, we provide a virtual serial port program, which automatically configure the serial port parameters, the user can not modify the application immediately to achieve network control.

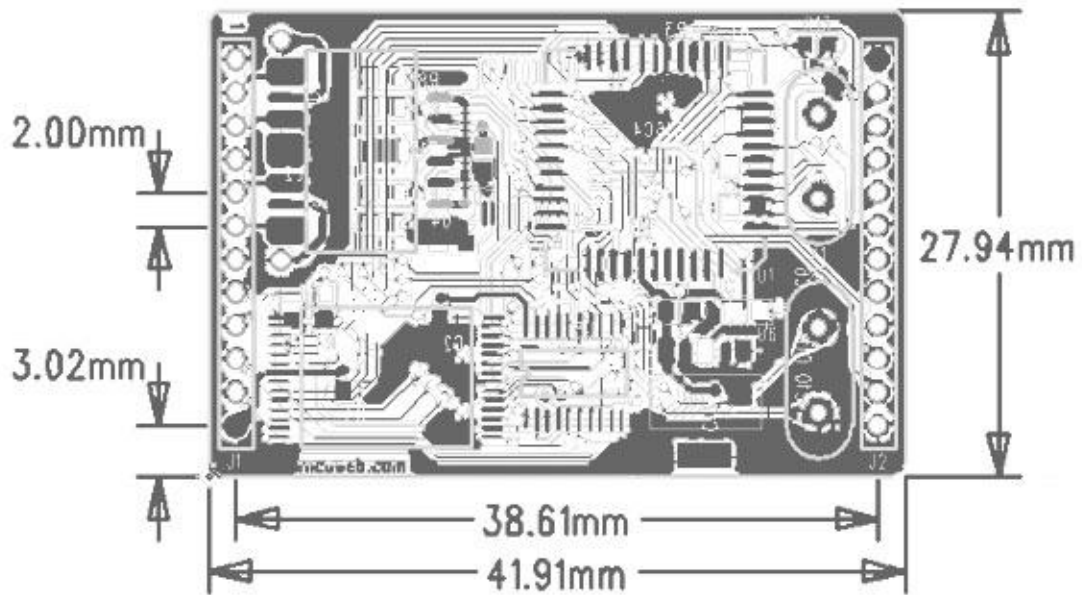
## **Application**

- Access / Security control systems (card readers, biometric identification devices)
- Medical / Healthcare (ECG, ultrasonic detector, blood testing devices)
- Industrial automation (PLC, test equipment)
- Telecommunications room (RTU) control, tank liquid level (CTU) detection
- POS network consumption, LED screen control
- Building automation control systems (HVAC, fire alarms)
- Information appliances (UPS monitoring module)

## Pinout



## Dimensions



## Specs

### Form Factor

Type: Pin type

Dimensions: 42 x 28 x 9 mm

Weight: 10 g

### Ethernet Interface

Rate: 10/100 Mbps, Auto MDI / MDIX

Protection: 1.5 KV isolation protection

Connection :4-pin RJ-45

### Serial Interface

Number of Ports: 1

Transmission Format: standard TTL

### Serial Communication Parameters

Parity: None, Even, Odd, Space, Mark

Data bits: 8

Stop bits: 1, 2

Flow Control: RTS / CTS

Baud rate: 300 bps ~ 230.4 Kbps (supports non-standard baud rate)

### Serial Signals

TTL: TxD, RxD, RTS, CTS, RST (reset circuit), GND

### Software

Network Protocol: ICMP, ARP, IP, TCP, UDP, DHCP, HTTP, DNS, SNMP V1/V2c

Configuration Options: Web browsers or search tools ezConfig

Mode: TCP Server, TCP Client, TCP Mixed, UDP, Real COM mode

### Environmental Limits

Operating temperature: -40 ~ 85 °C

Storage Temperature: -65 ~ 150 °C

Ambient Relative Humidity: 5 to 95% (non-condensing)

### Power Requirements

Power Input: 5 VDC,  $\pm 5\%$

Power Consumption: 100 mA @ 5 VDC (max.)

### Reliability

Automatic Reboot Trigger: Built-in WDT (watchdog timer)

### Warranty

Warranty Period: 5 years