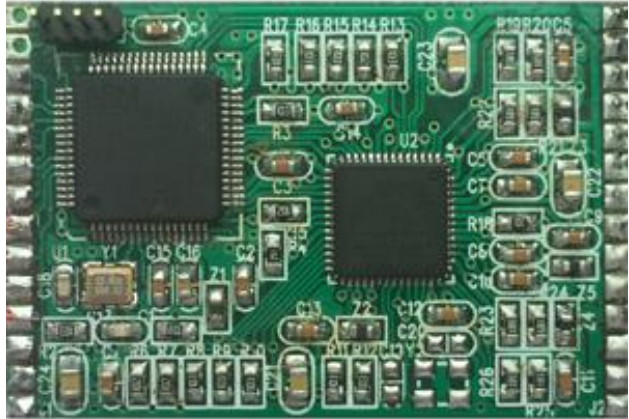


ArtNet-Module

Dual Ethernet Ports ArtNet Module

- Standard ArtNet protocol
- 32-bit ARM Processor, DMA transfer without delay
- Adaptive MDI/MDIX, both straight-through and crossover cable can work
- Built-in WDT, ensure long-term stable and reliable work
- Through ezConfig or web browser to read and set the parameter



Overview

ArtNet-Module is the latest bidirectional convertor module between ArtNet to DMX. Its user-friendly operation provides exclusive supports for ArtNet protocol; therefore users do not need to understand the complicate network protocols. ArtNet-Module has two Ethernet interfaces, therefore users needn't change the conventional connection. ArtNet-Module uses single side component placement, stamp pad and 3.3V Single-Supply. It is a very small PCB footprint that you can easily put inside your lighting fixtures and turn the fixtures into a compatible Art-Net protocol device.

Standard ArtNet protocol and various configuration parameters

ArtNet-Module use standard ArtNet protocol that provides bidirectional conversion between Art-Net and DMX. It provides user-friendly configuration tools to read and set parameter.

Exclusive support for RMD protocol

ArtNet-Module supports the Remote Device Management (RDM) protocol, facilitating the remote control and modification of parameter of light fixture. By this protocol, user could access to the fixture on software via network.

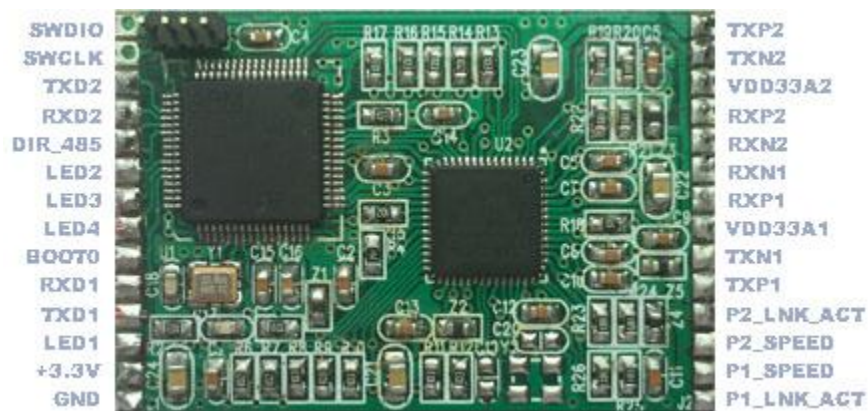
Easy installation and setup

ArtNet-Module supports automatic IP configuration protocol (DHCP, BootP), as well as manual settings via a Web browser. Both provide a fast and efficient method of installation. With ArtNet-Module ezConfig program, just a few simple steps, you can instruct the user to configure and activate the desired lighting networking applications. With this feature, users only need to spend an average of 30 seconds to complete the set of ArtNet-Module, saving a lot of time and effort.

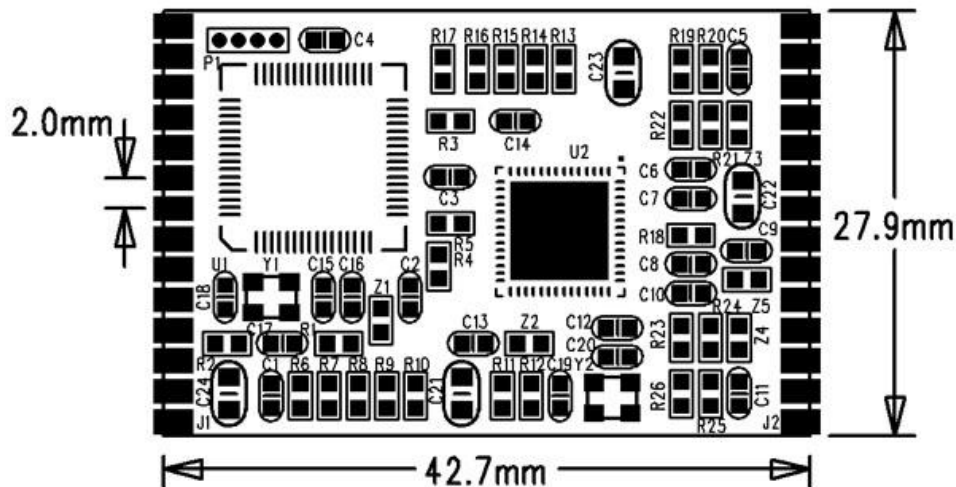
Application

- DMX lighting control network

Pinout



Dimensions



Specifications

Ethernet Interface

Number of Ports: 2

Rate: 10/100 Mbps, adaptive MDI / MDIX

LEDs: Speed 10/100 M, connection run (LNK / ACT)

Form Factor

Type: pin hole type or stamp

Weight: 40 g

Dimensions: 42 x 28mm

Environmental Limits

Operating Temperature: -40 ~ 85 ° C

Storage Temperature: -65 ~ 150 ° C

Ambient Relative Humidity: 5 to 95% (non-condensing)

Power Requirements

Power Input: DC 3.3V, \pm 5%

Power Consumption: 260 mA@3.3V DC max.

Reliability

Automatic Reboot Trigger: Built-in WDT (watchdog timer)

Warranty

Warranty: One-Year Limited Warranty