

# ArtNet-POE

## *2 Universes ArtNet Converter (RDM)*

- Standard ArtNet protocol
- 32-bit ARM Processor, DMA transfer without delay
- Adaptive MDI/MDIX, both straight-through and crossover cable can work
- Built-in WDT, ensure long-term stable and reliable work
- Through ezConfig or web browser to read and set the parameter



## Overview

ArtNet-POE converter uses standard Art-Net Protocol, providing bidirectional conversion between Art-Net and DMX. It is Power over Ethernet (PoE), which provides both data and power connections in one cable, so equipment doesn't require a separate cable for each need.

### **Standard ArtNet protocol and various configuration parameters**

ArtNet-POE converter use standard ArtNet protocol that provides bidirectional conversion between Art-Net and DMX. It provides user-friendly configuration tools to read and set parameter.

### **Exclusive support for RDM protocol**

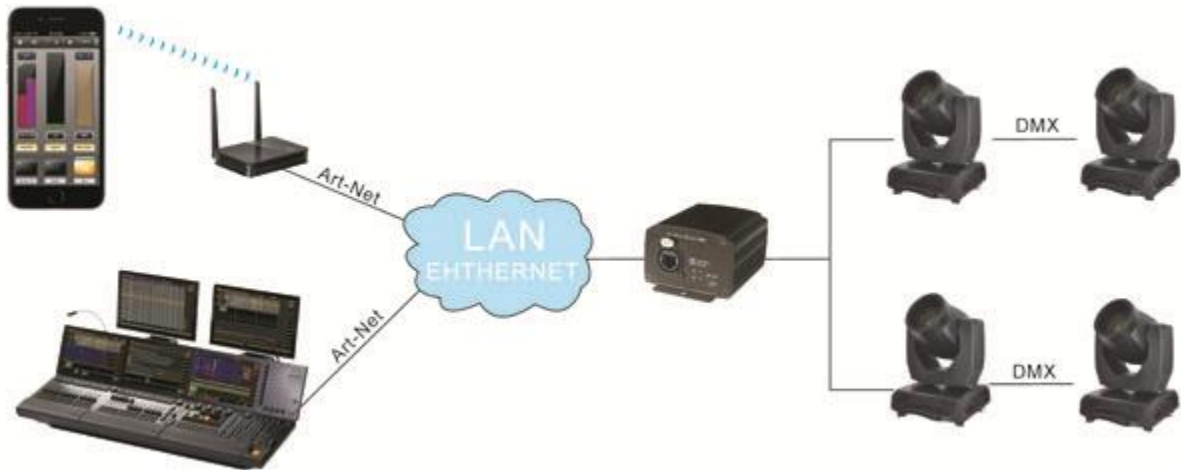
ArtNet-POE converter supports the Remote Device Management (RDM) protocol, facilitating the remote control and modification of parameter of light fixture. By this protocol, user could access to the fixture on software via network.

### **Easy installation and setup**

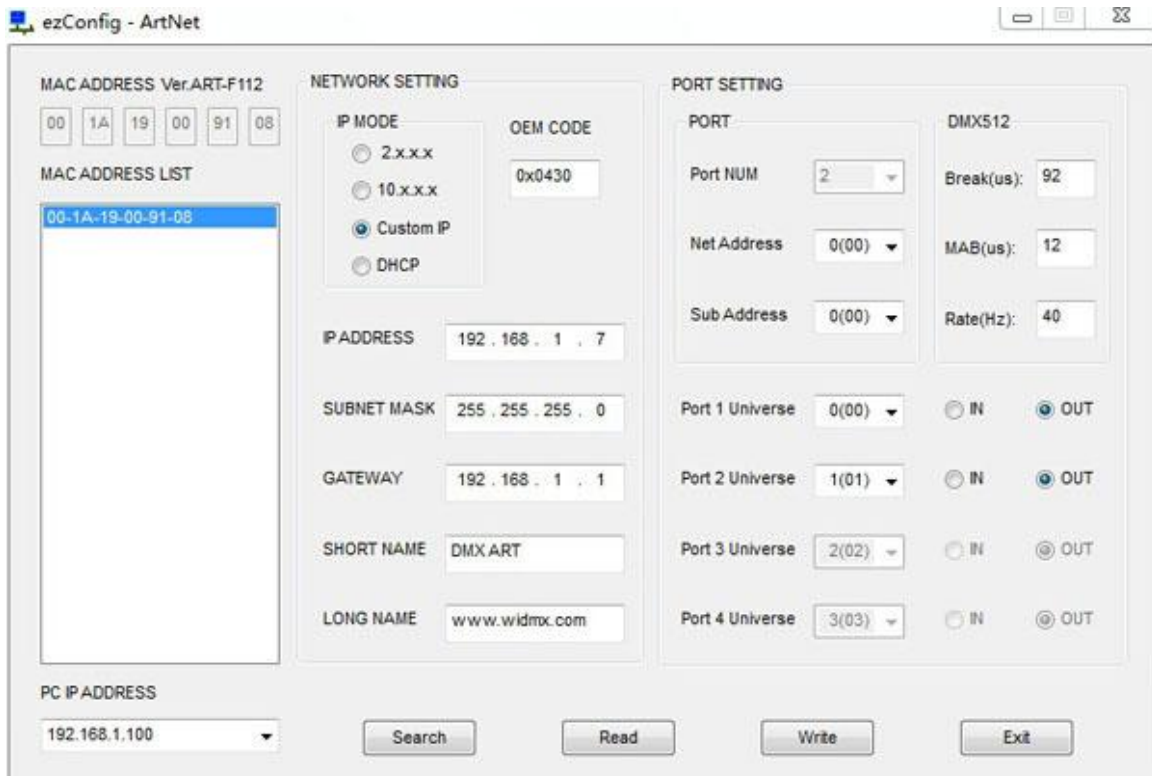
ArtNet-POE converter supports automatic IP configuration protocol (DHCP, BootP), as well as manual settings via a Web browser. Both provide a fast and

efficient method of installation. With ArtNet-POE converter ezConfig program, just a few simple steps, you can instruct the user to configure and activate the desired lighting networking applications. With this feature, users only need to spend an average of 30 seconds to complete the set of ArtNet-POE converter, saving a lot of time and effort.

## Application



## Software Interface



## Specifications

### Ethernet Interface

Number of Ports: 1

Rate: 10/100 Mbps, adaptive MDI / MDIX

Connector: 8-pin RJ45 (EtherCon)

Magnetic Isolation Protection: Built-in 1.5 KV

### Form Factor

Shell: Metal

Weight: 240 g

Dimensions:

Without ears: 80 x 70 x 46 mm

With ears: 100 x 70 x 46 mm

### Environmental Limits

Operating Temperature: -40 ~ 85 °C

Storage Temperature: -65 ~ 150 °C

Ambient Relative Humidity: 5 to 95% (non-condensing)

### Power Requirements

Input Voltage: DC 5V or POE

### Reliability

Automatic Reboot Trigger: Built-in WDT (watchdog timer)

### Warranty

Warranty: Five-Year Limited Warranty