

ArtNet-8-1U

8 Universes ArtNet Converter (RDM)

- Standard ArtNet protocol
- 32-bit ARM Processor(M7, 480MHz), DMA transfer without delay
- Adaptive MDI/MDIX, both straight-through and crossover cable can work
- Built-in WDT, ensure long-term stable and reliable work
- Through ezConfig or web browser to read and set the parameter



Overview

ArtNet-8-1U is an ArtNet-DMX bidirectional converter, which supports 8 channels of DMX output at the same time, and each channel supports RDM function. The ArtNet-8-1U converter can directly access the lighting equipment in the network through the software. ArtNet-8-1U adopts standard 1U chassis design, sturdy and durable, user-friendly interface makes your lighting control stable and reliable.

Standard ArtNet protocol and various configuration parameters

ArtNet-8-1U converter use standard ArtNet protocol that provides bidirectional conversion between Art-Net and DMX. It provides user-friendly configuration tools to read and set parameter.

Exclusive support for RMD protocol

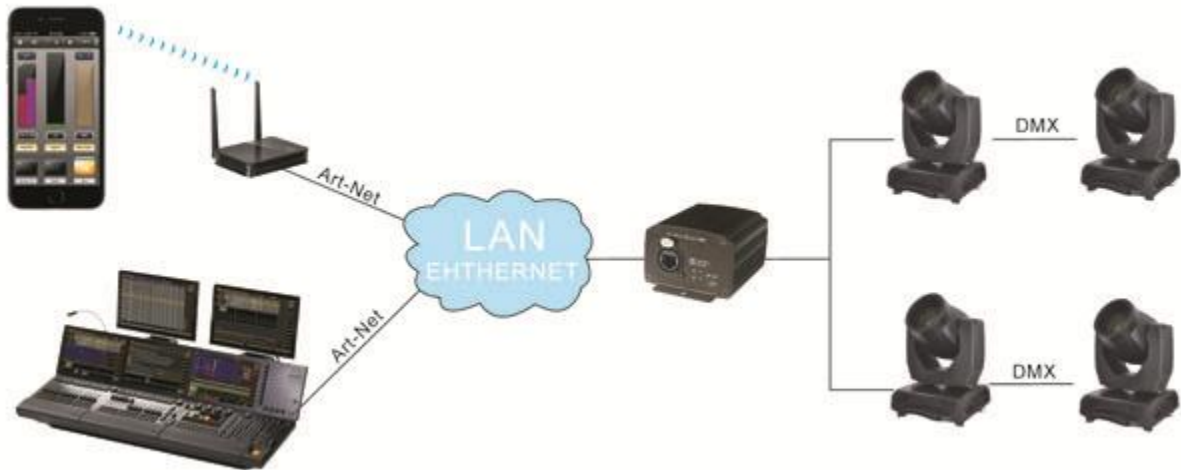
ArtNet-8-1U converter supports the Remote Device Management (RDM) protocol, facilitating the remote control and modification of parameter of light fixture. By this protocol, user could access to the fixture on software via network.

Easy installation and setup

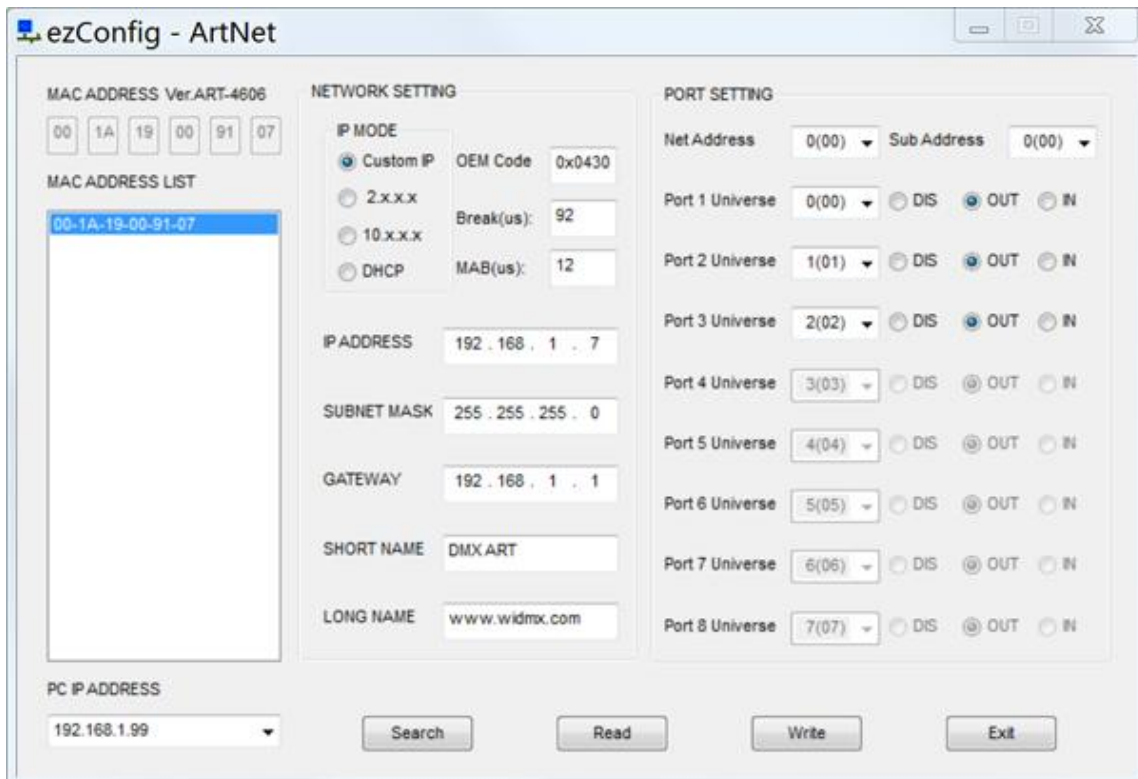
ArtNet-8-1U converter supports automatic IP configuration protocol (DHCP, BootP), as well as manual settings via a Web browser. Both provide a fast and

efficient method of installation. With ArtNet-8-1U converter ezConfig program, just a few simple steps, you can instruct the user to configure and activate the desired lighting networking applications. With this feature, users only need to spend an average of 30 seconds to complete the set of ArtNet-8-1U converter, saving a lot of time and effort.

Application



Software Interface



Specifications

Ethernet Interface

Number of Ports: 2

Rate: 10/100 Mbps, adaptive MDI / MDIX

Connector: 8-pin RJ45 (EtherCon)

Magnetic Isolation Protection: Built-in 1.5 KV

Form Factor

Shell: Metal

Weight: 1.4 kg

Dimensions:

Without ears: 440 x 155 x 45 mm

With ears: 482 x 155 x 45 mm

Environmental Limits

Operating Temperature: -40 ~ 85 °C

Storage Temperature: -65 ~ 150 °C

Ambient Relative Humidity: 5 to 95% (non-condensing)

Power Requirements

Input Voltage: 100 - 240VAC

Reliability

Automatic Reboot Trigger: Built-in WDT (watchdog timer)

Warranty

Warranty: Five-Year Limited Warranty